

NDI Function Guide

◆ Overview

In this document, we explain and guide developer how to get a connection state in NDI.

Preparation :

1. CODECS 1.1.0.172.9
2. Demo NDI -172.9
3. NewTek NDI Tools

NDI Function Guide

1. Dowload and install NewTek NDI Tools .
2. Run NDI Video Monitor.exe



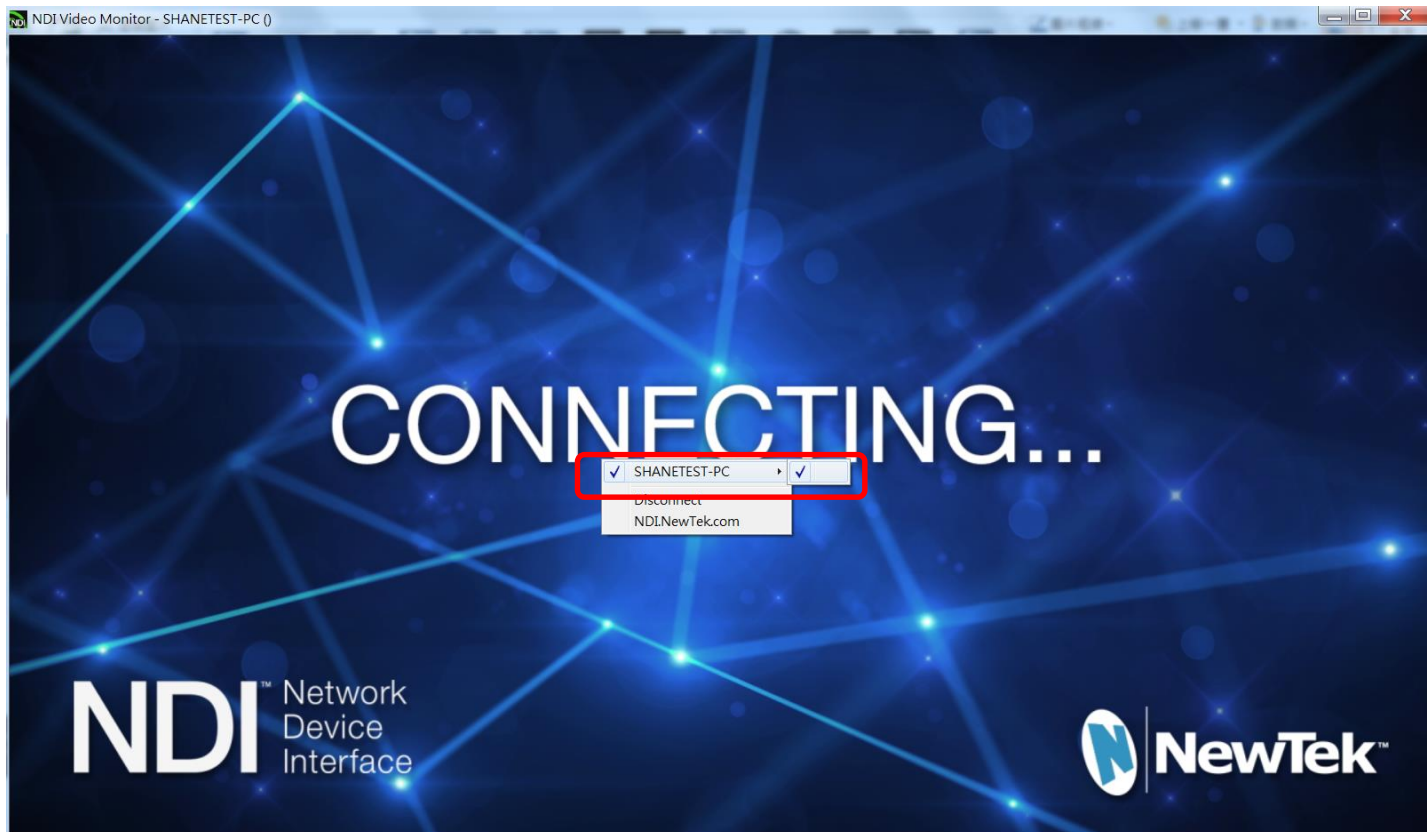
NDI Function Guide

1. After install Codec 1.1.0.172.9, Please run NetBroadcaster.exe
2. Please click the start button NetBroadcaster is running.



NDI Function Guide

1. After NDI server start, Please right click on NewTek NDI Tools.
2. Choose client which server .



NDI Function Guide

1. Can client the NDI source on NewTek NDI Tools
2. Note: NDI server support color space YUY2 or RGB24.

